
 SET OF 6 | **Autumn Days**
 115452 \$23.95

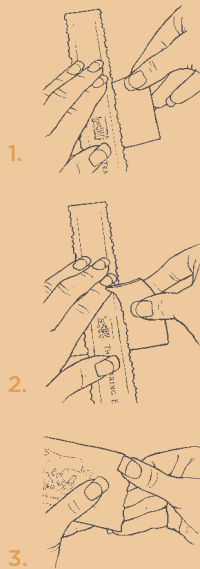


autumn COLLECTION



Autumn offers a cornucopia of creativity! Make the wreath shown here by securing cutout leaves to a round, metal frame. Overlap the leaves to create a wreath as full as you like.

also try this technique...



1. Place The Tearing Edge on the card stock. 2. Pull the card stock toward you to create the torn edge. 3. Distress the edge by hand to create the look shown on the Noble Life card at left.



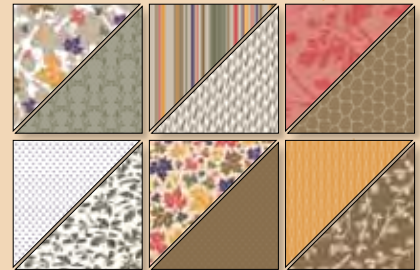
Autumn Harvest Rub-Ons
115731 **\$10.95**
page 177



Leaves #2 Originals Die
113459 **\$15.95**
page 202

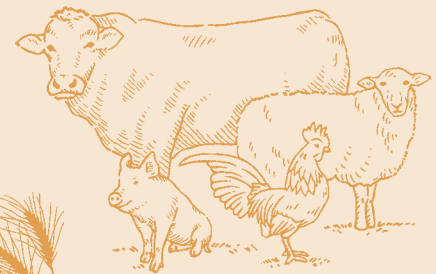
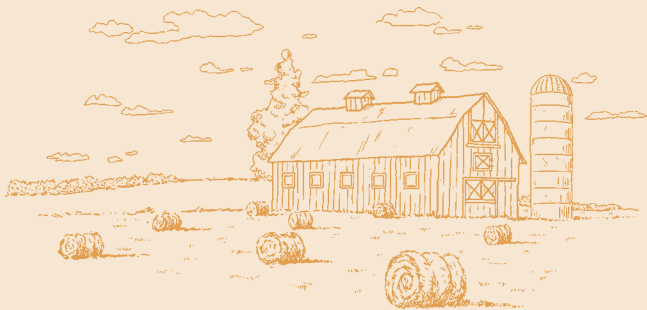


Orchard Ribbon Originals
116232 **\$9.95**
page 182



Autumn Traditions Designer Series Paper
115668 **\$9.95**
page 160

Every noble life leaves its fiber interwoven
forever in the work of the world.



Farm Life | SET OF 4 
114411 **\$21.95**