

Mini Milk Carton Gift Box

Dawn Olchefske, Stampin' Up! Independent Demonstrator
dostamping@yahoo.com, 763-658-7016
www.dostamping.stampinup.net
www.dostamping.typepad.com



Measurements & Scoring

Bottom:

Color Basic Black
Size 5-1/2" x 3-7/8"
Scoring 1" on all four sides

Top:

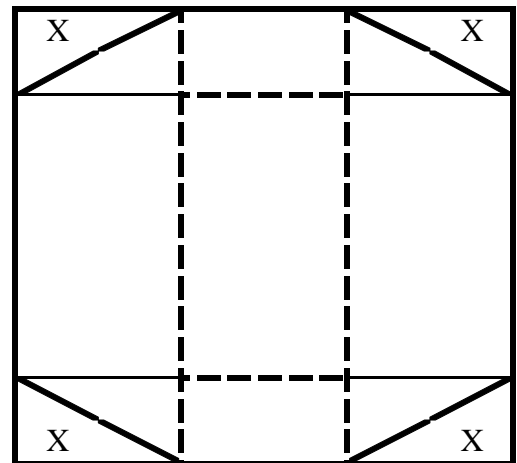
Color Bermuda Bay
Size 8-7/8" x 7-1/4"
Scoring 2-5/8" on all four sides

Directions:

Fold on all the score lines, cut on the solid lines
Diagonal cut all four corners (discard X)
Put Sticky Strip on the Diagonals (on the outside)
Fold and assemble your boxes

Supplies

Stamp set: Four Squared
Punch: Scallop Square
Pattern Paper: Thoroughly Modern
Accessories:
30" Basic Black 1-1/4" Striped Ribbon
Clip Assortment
Linen Thread
Big Shot
Mini Milk Carton L Die



(* not to scale)



(Fits 2 Stampin' Up! Mini Milk Cartons)